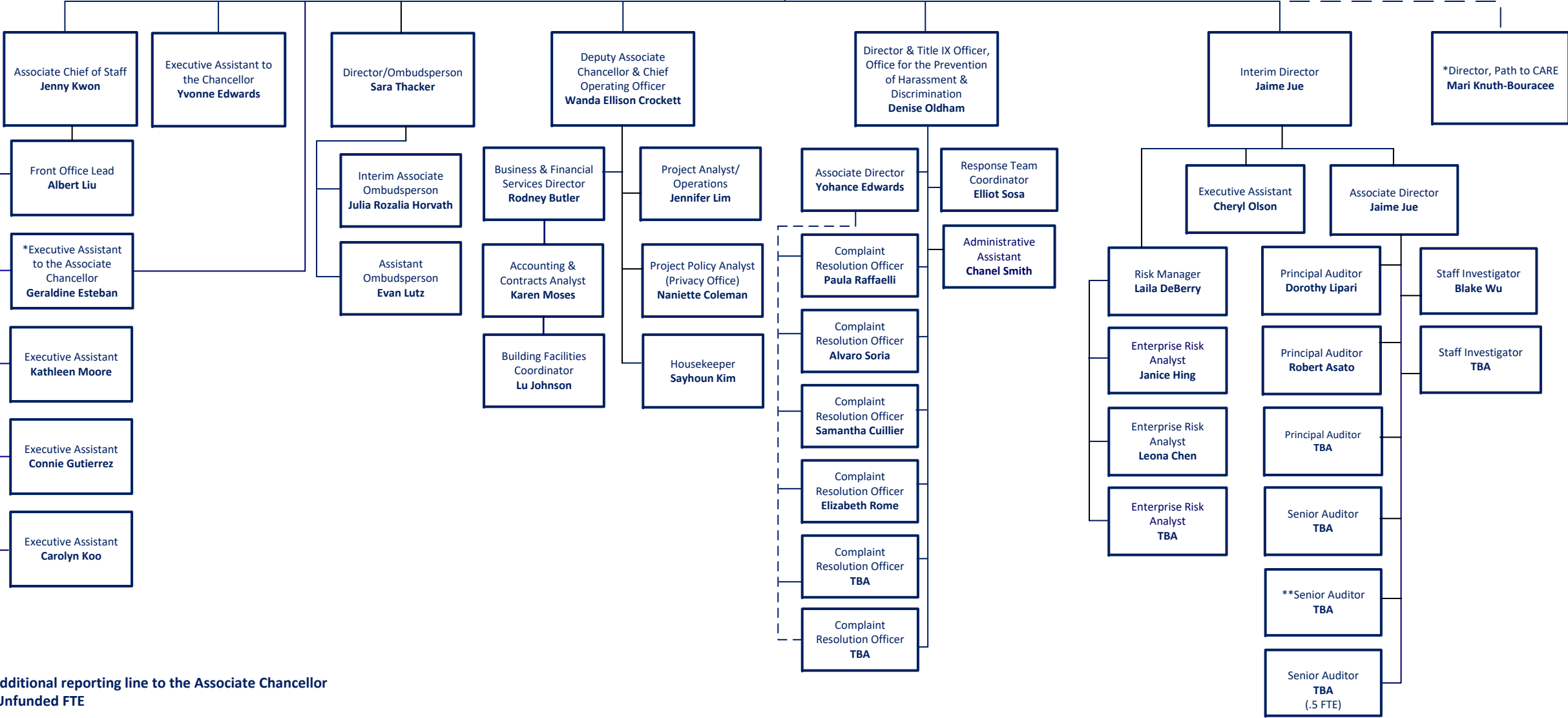


# Associate Chancellor, Chief of Staff & Campus Chief Ethics, Risk & Compliance Officer

## Organizational Structure

### University of California, Berkeley

Associate Chancellor, Chief of Staff  
 Chief Ethics, Risk & Compliance Officer  
**Khira Griscavage**



\* Additional reporting line to the Associate Chancellor  
 \*\*Unfunded FTE